

WELCOME COFFEE

08:30

08:55-09:00 VIP STAGE

**Opening words**

Anne-Catherine Husson-Traore, CEO, Novethic

09:00-09:15 VIP STAGE

**SRI & innovation to unleash the power of sustainable transformation**

Valentijn van Nieuwenhuijzen, Chief Investment Officer, NN Investment Partners

09:15-09:50 VIP STAGE

**The quest of Impact: What standardization for ESG data?**

Dexter Galvin, Global Director of Corporations and Supply Chains, CDP

Panos Seretis, Head of ESG Research Europe, MSCI

Nathan Fabian, Chief Responsible Investment Officer, UNPRI

**Moderator:** Anne-Catherine Husson-Traore, CEO, Novethic

09:50-10:10 VIP STAGE

**Creating shared value: A winning strategy for the food transition?**

Laurent Vallée, General Secretary, Carrefour

**Moderator:** Anne-Catherine Husson-Traore, CEO, Novethic

NETWORKING BREAK

10:10

10:20-10:50 MEWES

WORKLABS

**AGORA 1 • The Impact Management Mind Map**

Ivo Luiten, Senior Portfolio Manager Impact Investing, NN Investment Partners

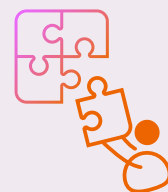
**AGORA 2 • 5 ways to properly fail your ESG integration process?**

Sonia Fasolo, SRI Fund Manager, La Financière de l'Echiquier

Coline Pavot, SRI Analyst, La Financière de l'Echiquier

**AGORA 3 • Impact measurement: More complicated than quantum theory?**

Catherine Flockhart, Director, Baillie Gifford



NETWORKING BREAK

10:50

11:05-11:35 MEWES

WORKLABS

**AGORA 1 • Impact investment: Building positive value through social & environmental impact**

Martin Ewald, Head of Investment Strategy & Infrastructure Equity, Allianz Global Investors

**AGORA 2 • ESG integration & engagement: Towards an effective credit risk assessment**

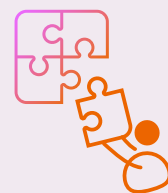
Xavier Baraton, Global CIO, Fixed Income and Alternatives, HSBC Global Asset Management

Rachida Mourahib, Credit Analyst, European Fixed Income, HSBC Global Asset Management

**AGORA 3 • Social impact in listed equities: seize the opportunity, navigate the challenges**

Ben Constable Maxwell, Director impact investing, M&G

Véronique Chaplow, Investment Specialist, M&G



## NETWORKING BREAK

11:35

11:45-12:20

VIP STAGE

### Greening business models, the new deal!

Astrid Panosyan, Group Chief Resources Officer, Unibail Rodamco  
Helmut von Glasenapp, Secretary-General, European Long-Term Investors Association  
Xavier Girre, Group Executive Director in charge of Finance, Groupe EDF  
**Moderator:** Arnaud Dumas, Journalist, Sustainable Finance Editor, Novethic

12:20-12:35

VIP STAGE

### Impact? Yes, but measurement!

Benoit Leandri, Head of Institutional Clients, Schroders

12:40

## NETWORKING LUNCH

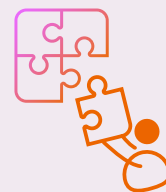
14:10-14:40

VIP STAGE

### WORKLABS

#### Quantify the real impacts of companies on society and planet

Benoit Leandri, Head of Institutional Clients, Schroders



14:40-15:00

VIP STAGE

#### Is shareholder engagement powerful to cut carbon emissions?

Faryda Lindeman, Responsible Investment Specialist, NN Investment Partners  
Nadine Viel Lamare, Director, Transition Pathway Initiative (TPI)  
**Moderator:** Anne-Catherine Husson-Traore, CEO, Novethic

15:00-15:15

VIP STAGE

#### Big technology: Changing attitudes to social responsibility in the online world

Andrew Cave, Head of Governance and Sustainability, Baillie Gifford

15:15-15:35

VIP STAGE

#### Changing the conversation with investors on medicine

Kathleen Tregoning, EVP, External Affairs, Sanofi  
Jayasree K. Iyer, Executive Director, Acces to Medicine Fondation  
**Moderator:** Anne-Catherine Husson-Traore, CEO, Novethic

15:35

## NETWORKING BREAK

15:50-16:00

VIP STAGE

#### What if businesses listen to the biodiversity call?

Claude Fromageot, Director of Responsible Development, Rocher Group

16:00-16:40

VIP STAGE

#### Can finance reconcile businesses with the "Planetary Boundaries for Biodiversity"?

Antoine Vallier, Project Manager, CDC Biodiversité  
Eva Mayerhofer, Lead Environment and Biodiversity Specialist Environment, Climate and Social Office, European Investment Bank  
Roel Nozeman, Senior Advisor Biodiversity, ASN Bank  
**Moderator:** Béatrice Héraud, Chief editor, CSR expert, Novethic

16:40-17:00

VIP STAGE

#### Do investors and companies listen Emergency call from Scientists and students?

Jean Pascal van Ypersele, Climate Scientist  
Vinciane Martin, Manifeste étudiant pour un réveil écologique

